

DO NOT OPEN THE SEAL OF THE BOOKLET UNTIL YOU ARE TOLD TO DO SO

Test Form No.  
टेस्ट फार्म संख्या  
015PK4

SC 2012

BC: 1022796

Time Allowed : 2 Hours (For VH Candidates : 2 hr 40 min)

Maximum Marks : 200

निर्धारित समय : 2 घंटे (दृष्टिबाधित उम्मीदवारों के लिए : 2 घंटे 40 मिनट)

अधिकतम अंक : 200

Read the following instructions carefully before you begin to answer the questions.

This booklet contains questions in English as well as in Hindi.

प्रश्नों के उत्तर देने से पहले निम्नलिखित अनुदेशों को ध्यान से पढ़ लें।

इस पुस्तिका में प्रश्न अंग्रेजी तथा हिन्दी दोनों में दिये गये हैं।

INSTRUCTIONS TO CANDIDATES	उम्मीदवारों के लिए अनुदेश
1. This Booklet contains 200 questions in all comprising the following four parts : Part - A : General Intelligence & Reasoning (50 Questions) Part - B : General Awareness (50 Questions) Part - C : Quantitative Aptitude (50 Questions) Part - D : English Comprehension (50 Questions)	1. इस पुस्तिका में कुल 200 प्रश्न हैं, जिनमें निम्नलिखित चार भाग शामिल हैं : भाग-क : सामान्य बुद्धि एवं तर्क (50 प्रश्न) भाग-ख : सामान्य जानकारी (50 प्रश्न) भाग-ग : मात्रात्मक अभिज्ञता (50 प्रश्न) भाग-घ : अंग्रेजी परिज्ञान (50 प्रश्न)
2. In questions set bilingually in English and Hindi, in case of discrepancy, the English version will prevail.	2. अंग्रेजी और हिन्दी भाषा में तैयार किए गए द्विभाषी प्रश्नों में कोई विरसंगति होने की स्थिति में अंग्रेजी विवरण मान्य होगा।
3. All questions are compulsory and carry equal marks.	3. सभी प्रश्न अनिवार्य हैं तथा सबके बराबर अंक हैं।
4. The paper carries negative marking. 0.25 marks will be deducted for each wrong answer.	4. प्रश्न पत्र में नकारात्मक अंकन होगा। हर गलत उत्तर के लिए 0.25 अंक कटाय जाएंगे।
5. Before you start to answer the questions you must check up this Booklet and ensure that it contains all the pages (1-32) and see that no page is missing or repeated. If you find any defect in this Booklet, you must get it replaced immediately.	5. प्रश्नों के उत्तर देने से पहले आप इस पुस्तिका की जांच करके देख लें कि इसमें पूरे पृष्ठ (1-32) हैं तथा कोई पृष्ठ कम या दुबारा तो नहीं आ गया है। यदि आप इस पुस्तिका में कोई त्रुटि पाएँ, तो तत्काल इसके बदले दूसरी पुस्तिका ले लें।
6. You will be supplied the Answer-Sheet separately by the Invigilator. You must complete and code the details of Name, Roll Number, Ticket Number, Name of the Examination as mentioned in the Admission Certificate, Date of Birth and Test Form Number on Side-I of the Answer-Sheet carefully. You must also put your signature and left-hand thumb impression on the Answer-Sheet at the prescribed place before you actually start answering the questions. These instructions must be fully complied with, failing which, your Answer-Sheet will not be evaluated and you will be awarded 'ZERO' mark. (For VH candidates these details will be filled in by the scribe. However all VH candidates must put their left-hand thumb impression at the space provided in the Answer-Sheet. In addition, those VH candidates who can sign should also put their signatures in addition to thumb impression.)	6. निरोधक द्वारा आपको उत्तर-पत्रिका अलग से दी जाएगी। उत्तर-पत्रिका के Side-I में निम्नलिखित के अनुसार ध्यानपूर्वक अपना नाम, रोल नम्बर, टिकट नम्बर, परीक्षा का नाम जैसे प्रवेश पत्र में दिखाया गया है, जन्म तिथि और टेस्ट फार्म संख्या अवश्य लिखें। प्रश्नों के उत्तर वास्तव में शुरू करने से पहले उत्तर-पत्रिका पर निर्धारित स्थान में आप अपने हस्ताक्षर एवं बाएँ हाथ के अंगुठे का निशान भी अवश्य लगाएँ। उर्ध्वरूप अनुदेशों का पूरी तरह अनुपालन किया जाए, अन्यथा आपकी उत्तर-पत्रिका को बीजा नहीं जाएगा और 'शून्य' अंक दिया जाएगा। (दृष्टिबाधित उम्मीदवारों के लिए यह विवरण लिपिक द्वारा भरा जाए। परन्तु सभी दृष्टिबाधित उम्मीदवार उत्तर-पत्रिका में निर्धारित स्थान पर अपने बाएँ हाथ के अंगुठे का निशान अवश्य लगाएँ। इसके अतिरिक्त, जो दृष्टिबाधित उम्मीदवार हस्ताक्षर कर सकते हैं, वे अंगुठे के निशान के अलावा अपने हस्ताक्षर भी कर दें।)
7. Answers must be shown by completely blackening the corresponding rectangles on Side-II of the Answer-Sheet against the relevant question number by Black/Blue Ball-point Pen only. Answers which are not shown by Black/Blue Ball-point Pen will not be awarded any mark.	7. उत्तर-पत्रिका में सभी उत्तर Side-II में प्रश्न संख्या के सामने दिये गये सम्बन्धित आयताकार खानों को केवल काला/नीला बॉल-पॉइंट पेन से पूरी तरह काला करके दिखारें। जो आयताकार खाने काला/नीला बॉल-पॉइंट पेन से नहीं भरे जाएँगे, उनके लिए कोई अंक नहीं दिया जाएगा।
8. A machine will read the coded information in the OMR Answer-Sheet. In case the information is incomplete/different from the information given in the application form, the candidature of such candidate will be treated as cancelled.	8. ओ.एम.आर. उत्तर-पत्रिका में भरी गई कूट सूचना को एक मशीन पढ़ेगी। यदि सूचना अपूर्ण है अथवा आवेदन प्रपत्र में दी गई सूचना से भिन्न है, तो ऐसे अभ्यर्थी को अभ्यर्थिता निरस्त समझी जाएगी।
9. The Answer-Sheet must be handed over to the Invigilator before you leave the Examination Hall.	9. परीक्षा-भवन छोड़ने से पहले परीक्षार्थी को उत्तर-पत्रिका निरोधक के हवाले कर देनी चाहिए।
10. Failure to comply with any of the above instructions will render a candidate liable to such action/penalty as may be deemed fit.	10. ऊपर के अनुदेशों में से किसी एक का भी पालन न करने पर उम्मीदवार पर विवेकानुसार कार्यवाही की जा सकती है या दण्ड दिया जा सकता है।
11. The manner in which the different questions are to be answered has been explained at the back of this Booklet (Page No. 32), which you should read carefully before actually answering the questions.	11. विभिन्न प्रश्नों के उत्तर देने की विधि इस पुस्तिका के पीछे (पृष्ठ संख्या 32) में छपे हुए निर्देशों में दे दी गई है, इसे आप प्रश्नों के उत्तर देने से पहले ध्यानपूर्वक पढ़ लें।
12. Answer the questions as quickly and as carefully as you can. Some questions may be difficult and others easy. Do not spend too much time on any question.	12. प्रश्नों के उत्तर जितनी जल्दी हो सके तथा ध्यानपूर्वक दें। कुछ प्रश्न आसान तथा कुछ कठिन हैं। किसी एक प्रश्न पर बहुत अधिक समय न लगाएँ।
13. In lieu of Question No. 46 to 50 and 146 to 150 relating to figural and graph portions, alternate questions have been provided to be attempted by V.H. candidates only.	13. आकृति और आलेख से सम्बन्धित प्रश्न संख्या 46 से 50 एवं 146 से 150 के बदले में केवल दृष्टिबाधित उम्मीदवारों द्वारा हल किए जाने के लिए वैकल्पिक प्रश्न दिए गए हैं।
14. No rough work is to be done on the Answer-Sheet. Space for rough work has been provided below the questions in Part A and Part C of this Booklet.	14. कोई रफ़ कार्य उत्तर-पत्रिका पर नहीं करना है। रफ़ कार्य के लिए स्थान इसी पुस्तिका के भाग क तथा भाग ग के प्रश्नों के नीचे दिया गया है।
15. "Mobile phones and wireless communication devices are completely banned in the examination halls/rooms. Candidates are advised not to keep mobile phones/any other wireless communication devices with them even switching it off, in their own interest. Failing to comply with this provision will be considered as using unfair means in the examination and action will be taken against them including cancellation of their candidature."	15. "परीक्षा हॉलों/कमरों में मोबाइल फोन तथा बेतार संचार साधन पूरी तरह निषिद्ध हैं। प्रत्याशियों को उनके अपने हित में सलाह दी जाती है कि मोबाइल फोन/किसी अन्य बेतार संचार साधन को स्विच ऑफ़ करके भी अपने पास न रखें। इस प्रावधान का अनुपालन न करने को परीक्षा में अनुचित उपायों का प्रयोग माना जाएगा और उनके विरुद्ध कार्रवाई की जाएगी, उनकी अभ्यर्थिता रद्द कर देने सहित।"

इस पुस्तिका की सील तब तक न खोलें जब तक कहा न जाए।

PART - A

GENERAL INTELLIGENCE AND REASONING

Directions for question no. 1 to 9:

Select the related letter/word/number from the given alternatives:

1. Zoology : Animal :: Psychology :    ?  
 (A) Plant  
 (B) Animal  
 (C)  Human-being  
 (D) Animal and human-being
2. CFIL : ABCD ::    ? : WXYZ  
 (A)  XURO (B) ZYXW  
 (C) DCBA (D) JHPS
3. L × M : 12 × 13 :: U × W :    ?  
 (A)  21 × 23 (B) 21 × 22  
 (C) 24 × 26 (D) 9 × 11
4. Man : Mammal ::    ?  
 (A) Liberty : Literate  
 (B)  Hail : Snow  
 (C) Native : Inhabitant  
 (D) Offspring : Family
5. 6 : 2 :: 8 :    ?  
 (A) 5 (B) 1  
 (C) 3 (D) 7
6. CFIL : XURO :: ORUX :    ?  
 (A) MJFC (B) ROLI  
 (C) RITO (D)  LIFC
7. 1 : 8 :: 4 :    ?  
 (A)  32 (B) 64  
 (C) 512 (D) 128
8. Life starts : embryo :: Life ends :    ?  
 (A) Death (B) Old age  
 (C)  Dead body (D) Illness
9. EVFU : TGSH :: IRJQ :    ?  
 (A) PKLO (B) KWLX  
 (C)  PKOL (D) OLPK

Directions : In question no. 10 to 20 find the odd number/ letters/number pair from the given alternatives.

10. (A) 72 (B) 81  
 (C) 93 (D) 66
11. (A) (125, 27) (B) (64, 216)  
 (C) (216, 02) (D)  (343, 01)
12. (A) Division (B) Addition  
 (C)  Subtract (D) Multiplication
13. (A) 47 (B) 17  
 (C)  27 (D) 37
14. (A) 5270 - 2936 (B) 186 - 69  
 (C)  168 - 570 (D) 1001 - 100
15. (A)  $\begin{matrix} 8 & 5 & 3 & 6 & 2 \\ \hline \end{matrix}$  (B)  $\begin{matrix} 6 & 3 & 8 & 5 & 2 \\ \hline \end{matrix}$   
 (C)  $\begin{matrix} 5 & 2 & 6 & 3 & 8 \\ \hline \end{matrix}$  (D)   $\begin{matrix} 2 & 8 & 7 & 5 & 1 \\ \hline \end{matrix}$
16. (A) VEIIDD (B)  IVEF  
 (C) VEENS (D) EINN
17. (A) Arunachal Pradesh  
 (B) Jammu and Kashmir  
 (C)  Haryana  
 (D) Himachal Pradesh
18. (A) Size (B) Number  
 (C)  Form (D) Weight
19. (A)  Fish (B)  Frog  
 (C) Tortoise (D) Crab
20. (A) Board (B) Commission  
 (C) Team (D)  Agenda

SPACE FOR ROUGH WORK

**Directions :** In question no. 21 to 24 a series is given, with one term missing. Choose the correct alternative from the given ones that will complete the series.

21. RAZ SBY TCX UDW VEV ?  
 (A) ZAT (B) WFU  
 (C) FWU (D) XGX
22. AAC BBD CCE DDF EEG F ?  
 (A) DG (B) FG  
 (C) GH (D) FH
23. BIP ? D  
 (A) U (B) W  
 (C) S (D) R
24. DF, GJ, KM, NQ, RT, ?  
 (A) UX (B) UW  
 (C) YZ (D) XZ

**Directions :** In question no. 25 and 26, which one set of letters when sequentially placed at the gaps in the given letter series shall complete it ?

25. a<sup>b</sup>ba<sup>a</sup>c<sup>b</sup> aad<sup>b</sup>aa<sup>a</sup>ea  
 (A) babbb (B) babbd  
 (C) babbc (D) bacde
26. aa<sup>a</sup>aa<sup>a</sup>bb<sup>b</sup>b<sup>a</sup>aa<sup>a</sup>aa<sup>a</sup>bb<sup>b</sup>bb<sup>b</sup>  
 (A) bbbba (B) bbbba  
 (C) aabbb (D) babba
27. If  $64 \div 14 = 5$ ,  $92 \div 31 = 7$ ,  $26 \div 11 = 6$ , then  $56 \div 22 = ?$   
 (A) 11 (B) 39  
 (C) 7 (D) 36
28. It was Shriram's and Sreedevi's 12<sup>th</sup> Wedding Anniversary. Shriram said "When we got married, Sreedevi was  $\frac{3}{4}$ <sup>th</sup> of my age, but now she is  $\frac{5}{6}$ <sup>th</sup> of my age". What actually are their present ages ?  
 (A) Shriram 38, Sreedevi 32  
 (B) Shriram 36, Sreedevi 30  
 (C) Shriram 30, Sreedevi 24  
 (D) Shriram 40, Sreedevi 34

29. Find the wrong number in the series from the given alternatives.

17, 36, 53, 68, 83, 92

- (A) 92 (B) 53  
 (C) 68 (D) 83

30. If P denotes  $\div$ , Q denotes  $\times$ , R denotes  $+$ , and S denotes  $-$ , then  $18 Q 12 P 4 R 5 S 6 = ?$

- (A) 95 (B) 53  
 (C) 51 (D) 57

31. If DEAF is equal to 32, what will be LEAF = ?

- (A) 56 (B) 48  
 (C) 50 (D) 52

32. If  $25 \div 5 = 15$ ,  $30 \div 6 = 20$ , then  $35 \div 7 = ?$

- (A) 75 (B) 20  
 (C) 50 (D) 25

33. In a certain code, "CERTAIN" is coded as "XVIGZRM", "SEQUENCE" is coded as "HVJFVMXV". How would "REQUIRED" be coded ?

- (A) FJIVWVIR (B) VJIFWTRV  
 (C) WVJRIFVI (D) IVJFRIVW

**Directions :** In question no. 34 from the given alternatives select the word which cannot be formed using the letters of the given word.

34. 'CONSTITUTIONAL'

- (A) CONSULT (B) LOCATION  
 (C) TUTION (D) TALENT

35. If  $33 + 45 = 30$ ,  $90 + 26 = 40$ , then  $30 + 45 = ?$

- (A) 15 (B) 14  
 (C) 16 (D) 18

SPACE FOR ROUGH WORK

Directions : In question no. 36 and 37 select the missing number from the given responses.

36.



(A) 6

(B) 2

(C) 3

(D) 4

37.

7	6	9
2	8	4
4	3	?
36	42	26

(A) 5

(B) 2

(C) 3

(D) 4

38. Ram and Sham start walking in opposite directions. Ram covers 6 kms and Sham 8 kms. Then Ram turns right and walks 8 kms and Sham turns left and walks 6 kms. How far each is from the starting point ?

(A) 11 kms

(B) 8 kms

(C) 9 kms

(D) 10 kms

39. Sherly starting from a fixed point goes 15 m towards North and then after turning to his right he goes 15 m. Then he goes 10, 15 and 15 metres after turning to his left each time. How far is he from his starting point ?

(A) 15 metres

(B) 5 metres

(C) 10 metres

(D) 20 metres

Question No. 40 and 41.

40. Two statements are followed by 2 conclusions numbered I and II. Which one of the four alternatives is correct ?

Statement I : All teachers are aged.

Statement II : Some women are teachers.

Conclusion I : All aged are women.

Conclusion II : Some women are aged.

(A) Both conclusion I and II follow

(B) Only conclusion I follows

(C) Only conclusion II follows

(D) Neither conclusion I nor II follows

41. Statement I : All skaters are good swimmers.

Statement II : All good swimmers are runners.

Conclusion I : Some runners are skaters.

Conclusion II : Some skaters are good swimmers.

(A) Neither conclusion I nor II follow

(B) Only conclusion I follows

(C) Only conclusion II follows

(D) Both conclusion I and II follow

42. How many 9's are followed by and preceded by numbers divisible by 2 ?

8965359683496526973729413794173

498453976153195742968532957489451

(A) 12

(B) 6

(C) 8

(D) 10

43. If LUXOR is coded as 30, then GUILDS will be coded as ?

(A) 40

(B) 36

(C) 38

(D) 24

44. In the following list of English alphabets, one alphabet has not been used. Identify the same.

X N F A P S R W L T M D E X M G B

C X Q J L O P V R C Q J Z O H S G

O D I P T S M R A B E F G N U N E

(A) V

(B) I

(C) K

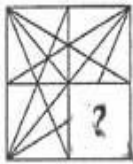
(D) J

45. If Alphabets are serially numbered, one of the answers given below has a meaningful word hidden in it. Identify the answer.

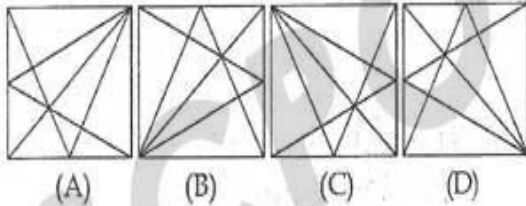
- (A) 5, 18, 5, 8, 1, 3, 5, 20
- (B) 5, 1, 3, 5, 20, 8, 18
- (C) 18, 5, 8, 1, 3, 5, 20
- (D) 20, 5, 8, 1, 3, 5, 18

Directions : In question no. 46, which answer figure will complete the question figure ?

46. Question figure

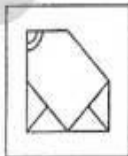


Answer figures

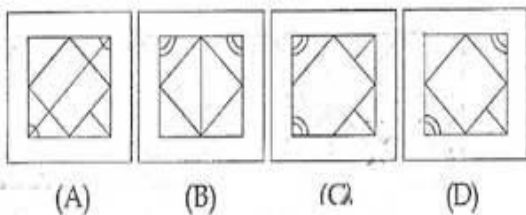


47. From the given answer figures, select the one in which the question figure is hidden/embedded

Question figure

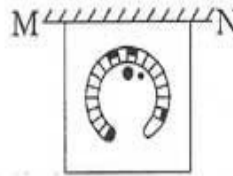


Answer figures

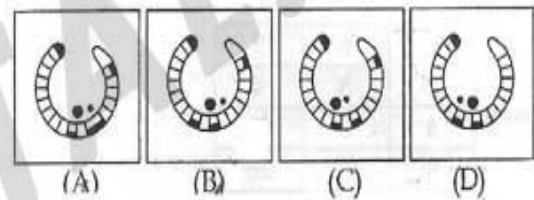


Directions : In question no. 48, if a mirror is placed on the line MN, then which of the answer figures is the right image of the given figure ?

48. Question figure

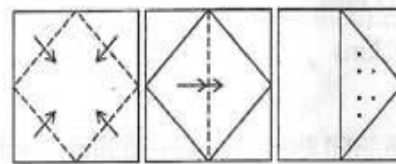


Answer figures

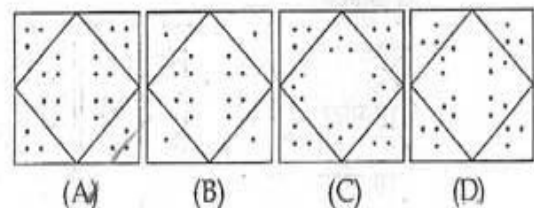


49. A square sheet of paper has been folded and punched as shown below. You have to figure out from amongst the four response figures, how it will appear when opened ?

Question figure



Answer figures



SPACE FOR ROUGH WORK

**Directions :** (Question No. 50) A word is represented by only one set of numbers as given in any one of the alternatives. The sets of numbers given in the alternatives are represented by two classes of alphabets as in two matrices given below. The columns and rows of Matrix I are numbered from 0 to 4 and that of Matrix II are numbered from 5 to 9. A letter from these matrices can be represented first by its row and next by its column, e.g., 'T' can be represented by 31, 76 etc. and 'S' can be represented by 14, 99, etc. Similarly, you have to identify the set for the word STAR.

50.

Matrix - I					
	0	1	2	3	4
0	G	V	E	A	C
1	R	O	N	G	(S)
2	M	N	E	(S)	I
3	O	(T)	I	T	A
4	N	S	N	E	P

Matrix - II					
	5	6	7	8	9
5	R	E	O	N	G
6	N	P	V	E	S
7	M	(T)	I	O	N
8	E	(A)	I	C	O
9	N	T	A	R	(S)

- (A) 99, 31, 86, 98
- (B) 23, 76, 33, 98
- (C) 14, 87, 98, 97
- (D) 69, 96, 03, 56

---

SPACE FOR ROUGH WORK

**PART - B**  
**GENERAL AWARENESS**

51. Which is NOT a correct statement ?  
(A) Phenols are acidic  
(B) In benzene all the atoms lie in one plane  
(C) Methylated spirit contains only methanol  
(D) Dilute solutions contain less amount of solute
52. The infective stage of Malaria is :  
(A) Gametocyte (B) Ring stage  
(C) Sporozoite (D) Merozoite
53. The treaty of Versailles restored Alsace-Lorraine to :  
(A) Italy (B) Britain  
(C) France (D) Belgium
54. The Asokan Edicts were deciphered first by :  
(A) Sir John Marshall  
(B) Sir William Jones  
(C) Charles Wilkins  
(D) James Prinsep
55. Which of the following is meant for the ex-situ conservation of various species ?  
(A) Sperm bank (B) Blood bank  
(C) Germplasm bank (D) Herbarium
56. An algae type ocean deposit is :  
(A) Neritic remains  
(B) Diatom Ooze  
(C) Pteropod Ooze  
(D) Pelagic deposits
57. Photosynthetic vesicle found in bacteria is called a :  
(A) Mesosome (B) Chromatophore  
(C) Genophore (D) Pneumatophore
58. What type of mirror is used in a view finding mirror of a vehicle ?  
(A) Convex mirror  
(B) Plane mirror  
(C) Concave mirror  
(D) Paraboloidal mirror
59. What is m-commerce ?  
(A) machine commerce  
(B) mobile commerce  
(C) money commerce  
(D) marketing commerce
60. Who said that the Directive Principles of State Policy are just like "a cheque on bank payable at the convenience of the bank".  
(A) Pandit Nehru (B) K.T. Shah  
(C) B.R. Ambedkar (D) N.G. Ranga
61. Wheat, Barley, Lemon, Orange, rye, and pearl millet belong to :  
(A) the same plant family  
(B) two plant families  
(C) three plant families  
(D) four plant families
62. Who favoured the Arctic Home theory of the Aryans ?  
(A) Pargiter (B) A.C. Das  
(C) B.G. Tilak (D) Jacobi
63. A plant known only in cultivation having arisen under domestication is referred to as :  
(A) Scion (B) Cultigen  
(C) Cultivar (D) Clone
64. The proposal for the creation of new All-India Services can be considered only :  
(A) if majority of State Legislatures make such demand  
(B) if Lok Sabha passes a resolution by two-thirds majority  
(C) if the Rajya Sabha passes a resolution by two-thirds majority  
(D) None of the above
65. Pyroligneous acid obtained from wood contains :  
(A) 10% Formaldehyde  
(B) 10% Acetic acid  
(C) 10% Formic acid  
(D) 10% ethanol

66. Union Carbide India Ltd. manufactured essentially :  
(A) Heavy water (B) Petrochemicals  
(C) Fertilizers (D) Leather goods
67. The iron and steel plant in Bihar is at :  
(A) Visakhapatnam  
(B) Bokaro  
(C) Burnpur  
(D) Vijay Nagar
68. Who was the teacher of Gautama Buddha ?  
(A) Panini (B) Alara Kalama  
(C) Kapila (D) Patanjali
69. Ram Sharan Sharma, who died in 2011 was an eminent  
(A) Chemist (B) Economist  
(C) Indologist (D) Archaeologist
70. The 34<sup>th</sup> National Games were held in 2011 in :  
(A) Uttarakhand (B) Kerala  
(C) Karnataka (D) Jharkhand
71. "Eye for an eye and tooth for a tooth" is the guiding principle of :  
(A) Attributive theory of Justice  
(B) Retributive theory of Justice  
(C) Deterrent theory of Justice  
(D) Reformative theory of Justice
72. Low cost housing is an example for :  
(A) Mixed wants (B) Social wants  
(C) Private wants (D) Merit wants
73. Tohra is the sacred book of :  
(A) Zoroastrianism  
(B) Confucianism  
(C) Taoism  
(D) Judaism
74. The 98<sup>th</sup> Indian Science Congress was held in 2011 at :  
(A) Bengaluru (B) Bhopal  
(C) Chennai (D) Bhubaneswar
75. Drying oils contain a fairly large proportion of :  
(A) Unsaturated fatty acids  
(B) Fats  
(C) Proteins  
(D) Saturated fatty acids
76. Consumption for the sake of enjoying social acknowledgement is called :  
(A) Rational consumption  
(B) Social consumption  
(C) Conspicuous consumption  
(D) Demonstration consumption
77. The red, orange and yellow colours of leaves are due to :  
(A) Carotenoids (B) Aldehydes  
(C) Tannins (D) Lignins
78. Which bank was the first to introduce ATMs to the world ?  
(A) Hong Kong Bank  
(B) Standard Chartered Bank  
(C) Bank of America  
(D) Citi Bank
79. We receive sunlight on earth surface. What type of light beams are these ?  
(A) Random (B) Parallel  
(C) Converging (D) Diverging
80. The state which has registered the highest population growth rate according to 2001 census is :  
(A) Kerala (B) Uttar Pradesh  
(C) Nagaland (D) Sikkim
81. Earth is a very big magnet. In which direction does its magnetic field extend ?  
(A) west to east (B) north to south  
(C) south to north (D) east to west
82. Of the following economists, whom do you consider to be the Master of "Partial Analysis" ?  
(A) Leon Walras (B) Alfred Marshall  
(C) J.M. Keynes (D) Lionel Robbins



83. The authority to specify which castes shall be deemed to be scheduled castes rests with the :  
(A) Commissioner for Scheduled Castes and Tribes  
(B) Prime Minister  
(C) President  
(D) Governor
84. Polar-bears hold cures for :  
(A) Type II diabetes (B) Osteoporosis  
(C) Breast - cancer (D) Kidney failure
85. Which colour/colours of light has the highest velocity through vacuum ?  
(A) Blue (B) Red  
(C) Green (D) All of the above
86. The ultimate source of energy in a hydroelectric power station is :  
(A) solar energy  
(B) the potential energy of water  
(C) the kinetic energy of water  
(D) the electro-chemical energy of water
87. Mamta Sharma was appointed in 2011 as the chairperson of :  
(A) National Commission for Minorities  
(B) National Commission for Protection of Child Right  
(C) National Commission for women  
(D) National Commission for B Cs
88. India making 'Double Taxation Avoidance Agreements' (DTAA) with other countries for the promotion of :  
(A) Bilateral trade  
(B) External commercial borrowings  
(C) Foreign direct investments  
(D) Foreign institutional investment
89. The seat of Kerala High Court is located at :  
(A) Kottayam  
(B) Thiruvananthapuram  
(C) Kollam  
(D) Ernakulam
90. The disease that kills more people than lung cancer as a consequence of air pollution is :  
(A) chronic bronchitis (B)  asthma  
(C) emphysema (D) heart attack
91. The most densely populated state in India is :  
(A) Kerala (B) Uttar Pradesh  
(C) West Bengal (D) Tamil nadu
92. Brain drain has been caused by :  
(A) failure to recognise talent in the originating country.  
(B) the lure of high living standards  
(C) lack of employment opportunities  
(D) socio-economic instability
93. Human Development Index was formulated by :  
(A) ASEAN (B) IBRD  
(C) UNDP (D) UNCTAD
94. The biggest planet in the solar system is :  
(A) Venus (B) Jupiter  
(C) Saturn (D) Uranus
95. Peninsular India has the following zonal soil types :  
(A) Red and yellow soil  
(B) Forest soil  
(C) Saline soil  
(D) Alluvial soil
96. The prose collection of the vedic poems are :  
(A) Samhitas (B) Upanishads  
(C) Aranyakas (D) Brahmanas
97. The study of population is known as \_\_\_\_\_.  
(A) Demography (B) Climatology  
(C) Petrology (D) Hydrology
98. Which of the following pairs is correctly matched ?  
(A) Milk of lime - sodium sulphate  
(B) Glauber's salt - calcium sulphate  
(C) Salt petre - potassium nitrate  
(D) Gypsum - calcium hydroxide
99. Who is the author of the book 'Pakistan : Beyond the Crisis State' ?  
(A) Khuram Iqbal (B) Maleeha Lodhi  
(C) Amir Mir (D) M.J. Akbar
100. The first speaker of Lok Sabha was :  
(A) S. Radhakrishnan  
(B) M. Ananthasayanam Ayyangar  
(C) Sardar Hukam Singh  
(D) G.V. Mavlankar

## PART - C

### QUANTITATIVE APTITUDE

101. If  $\cot A + \operatorname{cosec} A = 3$  and  $A$  is an acute angle, then the value of  $\cos A$  is:
- (A)  $4/5$  (B)  $1$   
 (C)  $1/2$  (D)  $3/4$
102. A three-digit number  $4a3$  is added to another three-digit number  $984$  to give the four digit number  $13b7$  which is divisible by 11. Then the value of  $(a + b)$  is:
- (A)  $11$  (B)  $12$   
 (C)  $9$  (D)  $10$
103. In a right-angled triangle  $ABC$ ,  $\angle B$  is the right angle and  $AC = 2\sqrt{5}$  cm. If  $AB - BC = 2$  cm, then the value of  $(\cos^2 A - \cos^2 C)$  is:
- (A)  $2/5$  (B)  $3/5$   
 (C)  $6/5$  (D)  $3/10$
104. A boy standing in the middle of a field, observes a flying bird in the north at an angle of elevation of  $30^\circ$  and after 2 minutes, he observes the same bird in the south at an angle of elevation of  $60^\circ$ . If the bird flies all along in a straight line at a height of  $50\sqrt{3}$  m, then its speed in km/h is:
- (A)  $4.5$  (B)  $3$   
 (C)  $9$  (D)  $6$
105. The perimeter of an isosceles right-angled triangle is  $2p$  unit. The area of the same triangle is:
- (A)  $(3 - 2\sqrt{2})p^2$  sq. unit  
 (B)  $(2 + \sqrt{2})p^2$  sq. unit  
 (C)  $(2 - \sqrt{2})p^2$  sq. unit  
 (D)  $(3 - \sqrt{2})p^2$  sq. unit
106.  $\triangle ABC$  and  $\triangle DEF$  are similar and their areas be respectively  $64 \text{ cm}^2$  and  $121 \text{ cm}^2$ . If  $EF = 15.4$  cm,  $BC$  is:
- (A)  $12.3$  cm (B)  $11.2$  cm  
 (C)  $12.1$  cm (D)  $11.0$  cm
107. If  $G$  is the centroid of  $\triangle ABC$  and  $AG = BC$ , then  $\angle BGC$  is:
- (A)  $75^\circ$  (B)  $45^\circ$   
 (C)  $90^\circ$  (D)  $60^\circ$
108. If  $\tan(x + y) \tan(x - y) = 1$ , then the value of  $\tan x$  is:
- (A)  $\sqrt{3}$  (B)  $1$   
 (C)  $1/2$  (D)  $1/\sqrt{3}$
109. In a partnership business, A invests  $\frac{1}{6}$  th of the capital for  $\frac{1}{6}$  of the total time, B invests  $\frac{1}{4}$  of the capital for  $\frac{1}{4}$  of the total time and C, the rest of the capital for the whole time. Out of a profit of ₹ 19,400, B's share is:
- (A) ₹ 2000 (B) ₹ 1200  
 (C) ₹ 1600 (D) ₹ 1800
110. A jar contains a mixture of two liquids A and B in the ratio  $4 : 1$ . When 10 lt of the mixture is replaced with liquid B, the ratio becomes  $2 : 3$ . The volume of liquid A present in the jar earlier was:
- (A) 20 lt (B) 10 lt  
 (C) 16 lt (D) 15 lt

SPACE FOR ROUGH WORK

111. If  $(5x^2 - 3y^2) : xy = 11 : 2$ , then the positive value of  $x/y$  is :  
 (A)  $7/2$  (B)  $5/2$   
 (C)  $3/2$  (D)  $5/3$
112. By decreasing  $15^\circ$  of each angle of a triangle, the ratios of their angles are  $2 : 3 : 5$ . The radian measure of greatest angle is :  
 (A)  $11\pi/24$  (B)  $\pi/12$   
 (C)  $\pi/24$  (D)  $5\pi/24$
113. The least value of  $4 \operatorname{cosec}^2\alpha + 9 \sin^2\alpha$  is :  
 (A) 14 (B) 10  
 (C) 11 (D) 12
114. The greatest no. that will divide 19, 35 and 59 to leave the same remainder in each case is :  
 (A) 9 (B) 6  
 (C) 7 (D) 8
115. The average temperature of Monday, Tuesday and Wednesday was  $30^\circ\text{C}$  and that of Tuesday, Wednesday and Thursday was  $33^\circ\text{C}$ . If the temperature on Monday was  $32^\circ\text{C}$ , then the temperature on Thursday was :  
 (A)  $33^\circ\text{C}$  (B)  $30^\circ\text{C}$   
 (C)  $31^\circ\text{C}$  (D)  $32^\circ\text{C}$
116. If  $a = \frac{\sqrt{3} - \sqrt{2}}{\sqrt{3} + \sqrt{2}}$ ,  $b = \frac{\sqrt{3} + \sqrt{2}}{\sqrt{3} - \sqrt{2}}$ , then the value of  $\frac{a^2}{b} + \frac{b^2}{a}$  is :  
 (A) 900 (B) 970  
 (C) 1030 (D) 930
117. The next term of the series  $-1, 6, 25, 62, 123, 214, \underline{\hspace{1cm}}$  is :  
 (A) 345 (B) 143  
 (C) 341 (D) 343
118. O is the circum centre of the triangle ABC with circumradius 13 cm. Let  $BC = 24$  cm and OD is perpendicular to BC. Then the length of OD is :  
 (A) 7 cm (B) 3 cm  
 (C) 4 cm (D) 5 cm
119. If  $ax + by = 6$ ,  $bx - ay = 2$  and  $x^2 + y^2 = 4$ , then the value of  $(a^2 + b^2)$  would be :  
 (A) 10 (B) 2  
 (C) 4 (D) 5
120. The area of the largest triangle that can be inscribed in a semi circle of radius  $x$  in square unit is :  
 (A)  $4x^2$  (B)  $x^2$   
 (C)  $2x^2$  (D)  $3x^2$
121. D and E are the mid-points of AB and AC of  $\Delta ABC$ ; BC is produced to any point P; DE, DP and EP are joined. Then,  
 (A)  $\Delta PED = \frac{1}{4} \Delta ABC$   
 (B)  $\Delta PED = \Delta BEC$   
 (C)  $\Delta ADE = \Delta BEC$   
 (D)  $\Delta BDE = \Delta BEC$
122. If  $a + \frac{1}{a} = 1$ , then the value of  $a^3$  is :  
 (A) -2 (B) 2  
 (C) -1 (D) 4
123. The mean of 19 observation is 24. If the mean of the first 10 observations is 17 and that of the last 10 observations is 24, find the 10<sup>th</sup> observation.  
 (A) 65 (B) 37  
 (C) 46 (D) 53

SPACE FOR ROUGH WORK

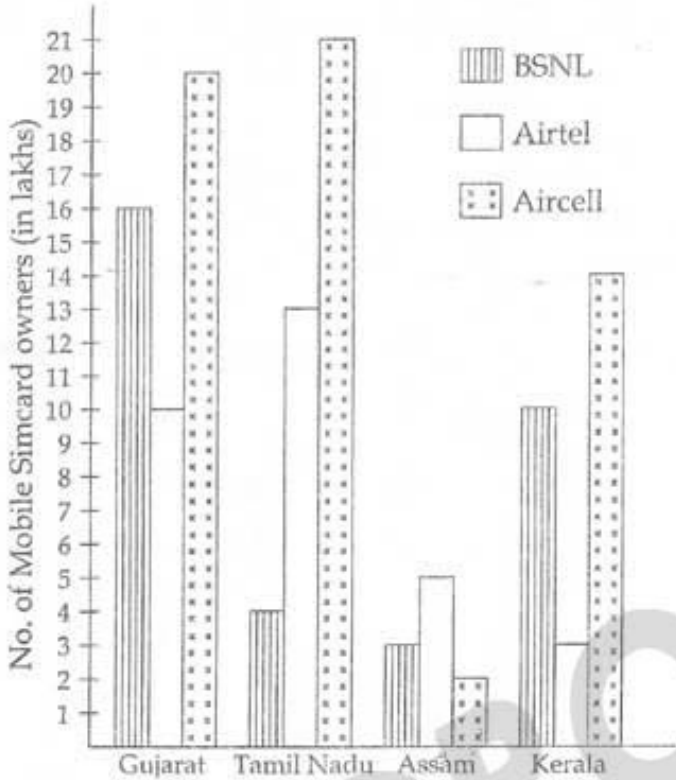
124. A watch is sold at a profit of 30%. Had it been sold for ₹80 less, there would have been a loss of 10%. What is the cost price in rupees?  
 (A) 150 (B) 200  
 (C) 400 (D) 800
125. A train overtakes two persons who are walking in the same direction in which the train is running, at the rate of 2 kmph and 4 kmph and passes them completely in 9 and 10 seconds respectively. The length of the train (in metres) is :  
 (A) 72 (B) 45  
 (C) 54 (D) 50
126. The length of the common chord of two circles of radii 15 cm and 20 cm whose centres are 25 cm apart is (in cm) :  
 (A) 20 (B) 24  
 (C) 25 (D) 15
127. If a commission of 10% is given on the marked price of a work, the publisher gains 20%. If the commission is increased to 15%, the gain percent is :  
 (A) 15% (B)  $16\frac{2}{3}\%$   
 (C)  $13\frac{1}{3}\%$  (D)  $15\frac{1}{6}\%$
128. If  $2\sqrt{x} = \frac{\sqrt{5} + \sqrt{3}}{\sqrt{5} - \sqrt{3}} - \frac{\sqrt{5} - \sqrt{3}}{\sqrt{5} + \sqrt{3}}$ , then the value of  $x$  is :  
 (A) 6 (B) 30  
 (C)  $\sqrt{15}$  (D) 15
129. If  $x = 2 + \sqrt{3}$ , then the value of  $\sqrt{x} + \frac{1}{\sqrt{x}}$  is :  
 (A)  $\sqrt{3}$  (B)  $\sqrt{6}$   
 (C)  $2\sqrt{6}$  (D) 6
130. If 12 men or 18 women can reap a field in 14 days, then working at the same rate, 8 men and 16 women can reap the same field in :  
 (A) 9 days (B) 5 days  
 (C) 7 days (D) 8 days
131. By selling 9 articles for a rupee, a man incurred a loss of 4%. To make a gain of 44%, the number of articles to be sold for a rupee is :  
 (A) 5 (B) 3  
 (C) 4 (D) 6
132. The simplified value of  $1 - \frac{\sin^2 A}{1 + \cos A} + \frac{1 + \cos A}{\sin A} - \frac{\sin A}{1 - \cos A}$  is :  
 (A)  $\cos A$  (B) 0  
 (C) 1 (D)  $\sin A$
133. If  $a^3 - b^3 = 56$  and  $a - b = 2$ , then the value of  $(a^2 + b^2)$  is :  
 (A) -10 (B) -12  
 (C) 20 (D) 18
134. If  $\tan \theta - \cot \theta = a$  and  $\cos \theta - \sin \theta = b$ , then the value of  $(a^2 + 4)(b^2 - 1)^2$  is :  
 (A) 4 (B) 1  
 (C) 2 (D) 3

SPACE FOR ROUGH WORK

135. Area of the trapezium formed by  $x$ -axis;  $y$ -axis and the lines  $3x + 4y = 12$  and  $6x + 8y = 60$  is :  
 (A) 37.5 sq. unit (B) 31.5 sq. unit  
 (C) 48 sq. unit (D) 36.5 sq. unit
136. Area of the triangle formed by the graph of the line  $2x - 3y + 6 = 0$  along with the coordinate axes is :  
 (A)  $1/2$  sq. units (B)  $3/2$  sq. units  
 (C) 3 sq. units (D) 6 sq. units
137. If  $(a^2 - b^2) \sin\theta + 2ab \cos\theta = a^2 + b^2$ , then the value of  $\tan\theta$  is  
 (A)  $\frac{1}{2ab}(a^2 + b^2)$  (B)  $\frac{1}{2}(a^2 - b^2)$   
 (C)  $\frac{1}{2ab}(a^2 - b^2)$  (D)  $\frac{1}{2}(a^2 + b^2)$
138. Prabhat took a certain amount as a loan from a bank at the rate of 8% p.a. simple interest and gave the same amount to Ashish as a loan at the rate of 12% p.a. If at the end of 12 years, he made a profit of ₹ 960 in the deal, then the original amount was :  
 (A) ₹ 3356 (B) ₹ 1000  
 (C) ₹ 2000 (D) ₹ 3000
139. AB is a diameter of a circle with centre O. CD is a chord equal to the radius of the circle. AC and BD are produced to meet at P. Then the measure of  $\angle APB$  is :  
 (A)  $120^\circ$  (B)  $30^\circ$   
 (C)  $60^\circ$  (D)  $90^\circ$
140. R and r are the radius of two circles ( $R > r$ ). If the distance between the centre of the two circles be d, then length of common tangent of two circles is :  
 (A)  $\sqrt{r^2 - d^2}$   
 (B)  $\sqrt{d^2 - (R - r)^2}$   
 (C)  $\sqrt{(R - r)^2 - d^2}$   
 (D)  $\sqrt{R^2 - d^2}$
141. P is a point outside a circle and is 13 cm away from its centre. A secant drawn from the point P intersects the circle at points A and B in such a way that  $PA = 9$  cm and  $AB = 7$  cm. The radius of the circle is :  
 (A) 5.5 cm (B) 5 cm  
 (C) 4 cm (D) 4.5 cm
142. If  $a + \frac{1}{a+2} = 0$ , then the value of  $(a+2)^3 + \frac{1}{(a+2)^3}$  is :  
 (A) 2 (B) 6  
 (C) 4 (D) 3
143. If  $\alpha$  is a positive acute angle and  $2\sin\alpha + 15\cos^2\alpha = 7$ , then the value of  $\cot\alpha$  is :  
 (A)  $3/4$  (B)  $4/3$   
 (C)  $\frac{\sqrt{5}}{2}$  (D)  $\frac{2}{\sqrt{5}}$
144.  $\frac{1 + 876542 \times 876544}{876543 \times 876543}$  is equal to  
 (A) 3 (B) 0  
 (C) 1 (D) 2
145. The perimeters of two similar triangles  $\Delta ABC$  and  $\Delta PQR$  are 36 cm and 24 cm respectively. If  $PQ = 10$  cm, then AB is :  
 (A) 25 cm (B) 10 cm  
 (C) 15 cm (D) 20 cm

SPACE FOR ROUGH WORK

The number of mobile simcards in 4 states are given in multiple bar diagrams. Study the diagram and answer the questions 146 to 150.



146. In Assam, the ratio of Aircell simcard and Airtel simcard sold is :

- (A) 3 : 2                      (B) 2 : 5  
 (C) 5 : 2                      (D) 2 : 3

147. In which state are there the largest number of owners of Airtel simcard ?

- (A) Tamilnadu                (B) Gujarat  
 (C) Kerala                      (D) Assam

148. Average of simcard sold in the four states in lakhs is

- (A) 30.25                      (B) 40.5  
 (C) 35                          (D) 33.75

149. The range of BSNL simcard sold in the 4 states in lakhs is :

- (A) 12                              (B) 15  
 (C) 14                              (D) 13

150. Of all the simcards sold in all the four states, the number of simcards sold in Gujarat is (approx)

- (A) 40%                          (B) 38%  
 (C) 35%                          (D) 42%

PART - D

ENGLISH COMPREHENSION

*Directions : In question no. 151 to 155, some parts of the sentences have errors and some have none. Find out which part of a sentence has an error and blacken the rectangle [■] corresponding to the appropriate letter (A, B, C). If a sentence is free from error, blacken the rectangle corresponding to (D) in the Answer Sheet.*

151. World is producing enough /  
(A)  
for every citizen but still there is hunger and malnutrition / (B)  
and it is continuing year after year. / No error.  
(C) (D)
152. The N.C.C commandant along with his cadets /  
(A)  
are going to Delhi /  
(B)  
to participate in the Republic Day Parade. /  
(C)  
No error.  
(D)
153. He did not succeed / to get the job / though he  
(A) (B)  
tried his level best / No error.  
(C) (D)
154. Many of the famous / advertising offices /  
(A) (B)  
are located at Madison Avenue. / No error.  
(C) (D)
155. Nature has denied us /  
(A)  
the power of closing our ears /  
(B)  
which she gave in respect of our eyes. /  
(C)  
No error.  
(D)

*Directions : In question no. 156 to 160, sentences are given with blanks to be filled in with an appropriate word(s). Four alternatives are suggested for each question. Choose the correct alternative out of the four and indicate it by blackening the appropriate rectangle [■] in the Answer Sheet.*

156. The ladies black purse, which is on sale has a beautiful \_\_\_\_\_ carved on it.  
(A) motif (B) patch  
(C) layout (D) schematic
157. Who is the person you \_\_\_\_\_ at the cinema last night ?  
(A) were recognising  
(B) recognised  
(C) have recognised  
(D) had recognised
158. As you sow \_\_\_\_\_ shall you reap.  
(A) when (B) as  
(C) like (D) so
159. He complemented her \_\_\_\_\_ new dress.  
(A) for (B) of  
(C) on (D) about
160. It took him a long time \_\_\_\_\_ the candidate's application.  
(A) to considering  
(B) to consider and weigh  
(C) considering weighing  
(D) to consider and to weigh

*Directions : In question no. 161 to 165, out of the four alternatives, choose the one which best expresses the meaning of the given word and mark it in the Answer sheet.*

161. Annexure  
(A) retirement (B) commencement  
(C) attachment (D) development
162. Errand  
(A) energy (B) task  
(C) mistake (D) blunder

163. Bequeath  
 (A) give (B) disclose  
 (C) scold (D) surround

164. Nonchalant  
 (A) imaginary (B) casual  
 (C) neutral (D) formal

165. Forbearance  
 (A) deliverance (B) patience  
 (C) extravagance (D) relevance

*Directions : In question no. 166 to 170, choose the word opposite in meaning to the given word and mark it in the Answer Sheet.*

166. Amenable  
 (A) Acquiescent (B) Distrustful  
 (C) Inattentive (D) Unwilling

167. Conspicuous  
 (A) blatant (B) definite  
 (C) obvious (D) obscure

168. Reproof  
 (A) Approbation  
 (B) Apposition  
 (C) Condemnation  
 (D) Appropriation

169. Niggard  
 (A) Avaricious (B) Extravagant  
 (C) Generous (D) Miserly

170. Exotic  
 (A) Conventional (B) Poor  
 (C) Inexpensive (D) Indigenous

*Directions : In question no. 171 to 175, four alternatives are given for the Idiom/phrase underlined in the sentence. Choose the alternative which best expresses the meaning of the Idiom/phrase and mark it in the Answer-Sheet.*

171. His speech has taken the wind out of my sails.  
 (A) made my words or actions ineffective  
 (B) made me depressed  
 (C) made me think of the future  
 (D) made me remember my past

172. There is no point in discussing the new project with him as he always pours cold water on any new ideas.

- (A) puts off (B) dislikes  
 (C) disapproves of (D) postpones

173. Regardless of what her parents said, she wanted to let her hair down that night.

- (A) Really enjoy (B) Wash her hair  
 (C) Comb her hair (D) Work till late

174. I jumped out of my skin when the explosion happened.

- (A) was in panic (B) was excited  
 (C) was nervous (D) was angry

175. She didn't realize that the clever salesman was taking her for a ride.

- (A) trying to trick her  
 (B) taking her in a car  
 (C) pulling her along  
 (D) forcing her to go with him

*Directions : In question no. 176 to 180, a part of the sentence is underlined. Below are given alternatives to the underlined part at (A), (B), (C) which may improve the sentence. Choose the correct alternative. In case no improvement is needed your answer is (D). Mark your answer in the Answer Sheet.*

176. It took her a long time to get past her failure in the medical examination.

- (A) through (B) over  
 (C) by (D) No improvement

177. The boy wanted to ask his father for money, but waited for a propitious occasion.

- (A) protective (B) prophetic  
 (C) prospective (D) No improvement

178. I did not agree with him ; he appeared to be so bigoted for me to concur.

- (A) much (B) very  
 (C) too (D) No improvement

179. As soon as she noticed the workmen, she asked them what they have been doing.

- (A) have done (B) had been  
 (C) are doing (D) No improvement

180. He was asleep before the mother tucked him off.

- (A) through (B) away  
 (C) in (D) No improvement



*Directions : In question no. 181 to 185, out of the four alternatives choose the one which can be substituted for the given words/sentence.*

181. A raised place on which offerings to a God are made.  
(A) rostrum (B) church  
(C) altar (D) mound
182. Something that cannot be explained :  
(A) unthinkable (B) impregnable  
(C) mysterious (D) inexplicable
183. A written declaration made on oath in the presence of a magistrate :  
(A) affidavit (B) dossier  
(C) voucher (D) document
184. A person who thinks only about himself 'and not about others' needs :  
(A) egomaniacal (B) egoistic  
(C) egotistic (D) egocentric
185. A guide-post pointing out the way for a place.  
(A) finger-post (B) lamp-post  
(C) checkpoint (D) lastpost

*Directions : In question no. 186 to 190, four words are given in each question, out of which only one word is correctly spelt. Find the correctly spelt word and indicate it in the Answer Sheet by blackening the appropriate rectangle [■].*

186. (A) digresion (B) digrestion  
(C) digression (D) degression
187. (A) presumpchous (B) presumtous  
(C) presumptuous (D) presomptous
188. (A) equalibirium (B) equilibrium  
(C) equilibrum (D) equilibirium
189. (A) vaterinerian (B) veterinarian  
(C) vetarinerian (D) veterinerian
190. (A) marrytime (B) marytime  
(C) maritime (D) meritime

*Directions : In question no. 191 to 200, you have two brief passages with 5 questions following each passage. Read the passages carefully and choose the best answer to each question out of the four alternatives and mark it by blackening the appropriate rectangle [■] in the Answer Sheet.*

#### PASSAGE - I (Question number 191-195)

"People very often complain that poverty is a great evil and that it is not possible to be happy unless one has a lot of money. Actually, this is not necessarily true. Even a poor man, living in a small hut with none of the comforts and luxuries of life, may be quite contented with his lot and achieve a measure of happiness. On the other hand, a very rich man, living in a palace and enjoying everything that money can buy, may still be miserable, if, for example, he does not enjoy good health or his only son has taken to evil ways. Apart from this, he may have a lot of business worries which keep him on tenterhooks most of the time. There is a limit to what money can buy and there are many things which are necessary for a man's happiness and which money cannot procure.

Real happiness is a matter of the right attitude and the capacity of being contented with whatever you have is the most important ingredient of this attitude".

191. The phrase "on tenterhooks" means :  
(A) in a state of thoughtfulness  
(B) in a state of anxiety  
(C) in a state of sadness  
(D) in a state of forgetfulness
192. It is true that :  
(A) money alone can give happiness  
(B) money always gives happiness  
(C) money seldom gives happiness  
(D) money alone cannot give happiness
193. A rich man's life may become miserable if he :  
(A) has evil son, bad health and business worries  
(B) does not enjoy good health  
(C) has business worries  
(D) has business worries and his only son has taken to evil ways

194. Which of the following is the most appropriate title to the passage ?

- (A) Poverty, a great evil
- (B) The key of happiness
- (C) Contentment, the key to happiness
- (D) Money and contentment

195. Which of the following statement is true ?

- (A) Only a poor but contented man can be happy
- (B) A poor but contented man can never be happy
- (C) A poor but contented man can be happy
- (D) A poor but contented man is always happy

**PASSAGE - II (Question number 196-200)**

The problem of water pollution by pesticides can be understood only in context, as part of the whole to which it belongs - the pollution of the total environment of mankind. The pollution entering our waterways comes from many sources, radioactive wastes from reactors, laboratories, and hospitals; fallout from nuclear explosions ; domestic wastes from cities and towns ; chemical wastes from factories. To these is added a new kind of fallout - the chemical sprays applied to crop lands and gardens, forests and fields. Many of the chemical agents in this alarming melange initiate and augment the harmful effects of radiation, and within the groups of chemicals themselves there are sinister and little - understood interactions, transformations, and summations of effect.

Ever since the chemists began to manufacture substances that nature never invented, the problem of water purification have become complex and the danger to users of water has increased. As we have seen, the production of these synthetic chemicals in large volume began in the 1940's. It has now reached such proportion that an appalling deluge of chemical pollution is daily poured into the nation's waterways. When inextricably mixed with domestic and other wastes discharged into the same water, these chemicals sometimes defy detection by the methods in ordinary use by purification plants. Most of them are so complex that they cannot be identified. In rivers, a really incredible variety of pollutants combine to produce deposits that sanitary engineers can only despairingly refer to as "gunk".

196. All the following words mean 'chemicals' except :

- (A) sands
- (B) substances
- (C) pesticides
- (D) deposits

197. The main argument of paragraph 1 is :

- (A) that there are sinister interaction in the use of chemicals
- (B) that there are numerous reasons for contamination of water supplies
- (C) that there are many dangers from nuclear fallout
- (D) that pesticides are dangerous

198. The word 'gunk' in the last line refers :

- (A) to the waste products deposited by sanitary engineers
- (B) to the debris found in rivers
- (C) to unidentifiable chemicals found in water
- (D) to the domestic water supplies

199. Water pollution can only be understood :

- (A) in relation to world contamination
- (B) by the whole human race
- (C) in context
- (D) in relation to the number of pesticides that exist

200. Water contamination has become serious :

- (A) since water pollution was difficult to assess
- (B) since nature has taken a hand in pollution
- (C) since chemists began to use new substances
- (D) since businessmen authorised the use of chemicals